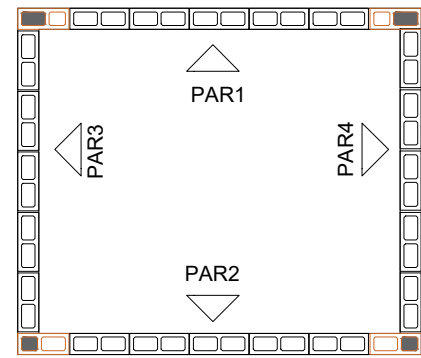
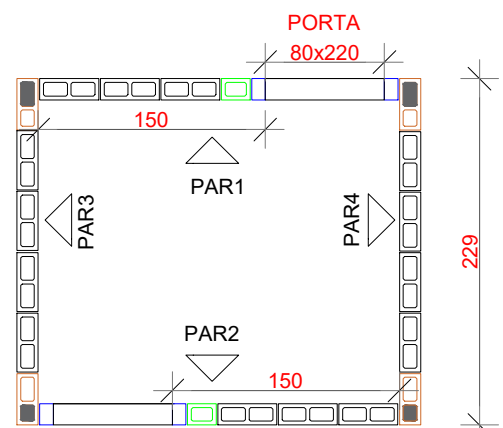


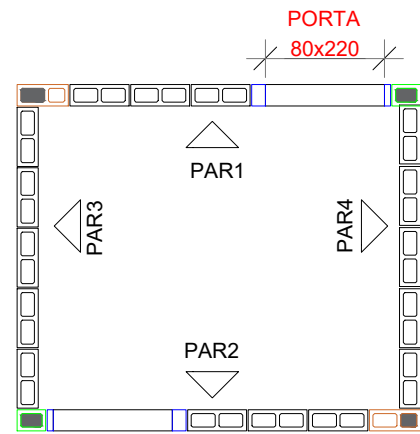
MODULAÇÃO 1ª FIADA
ESC:1/50



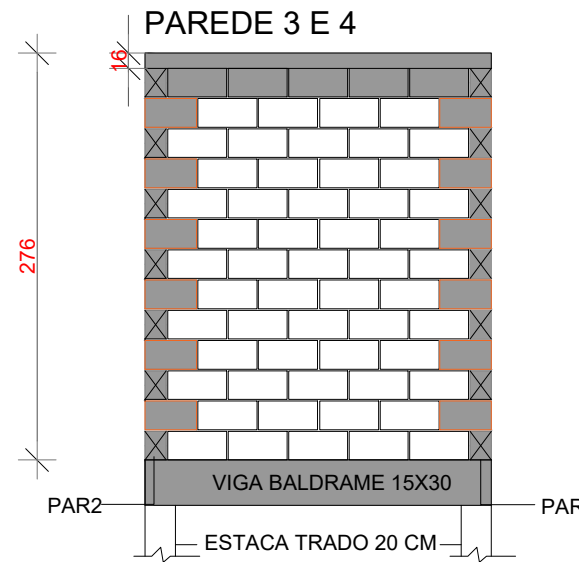
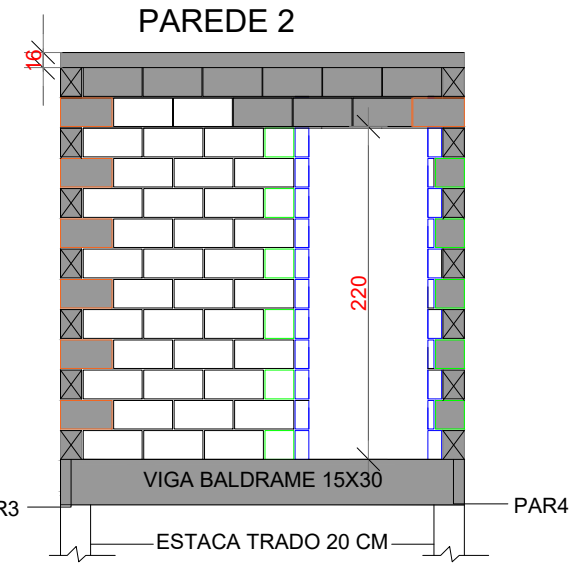
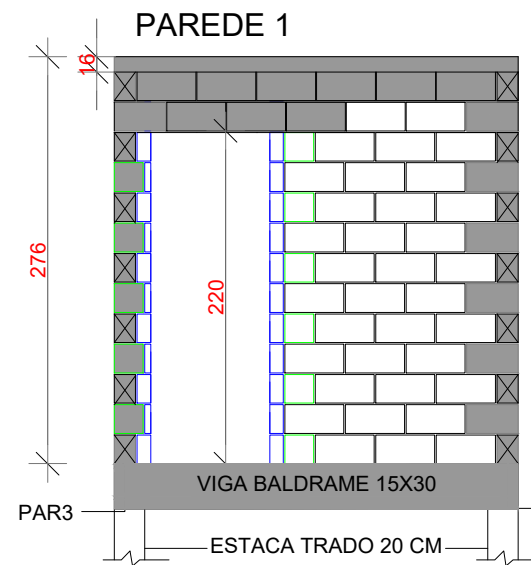
MODULAÇÃO 2ª FIADA
ESC:1/50



MODULAÇÃO 1ª FIADA
ESC:1/50

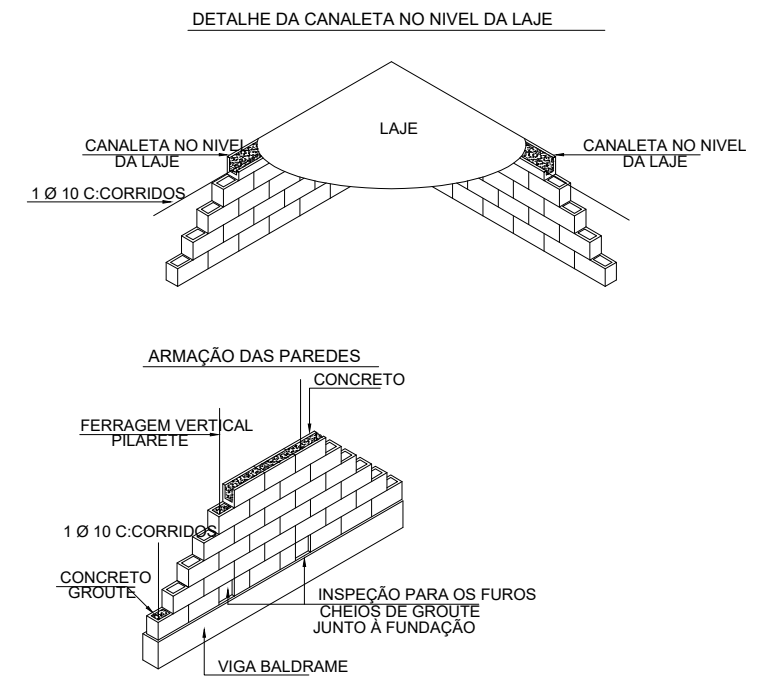


MODULAÇÃO 2ª FIADA
ESC:1/50



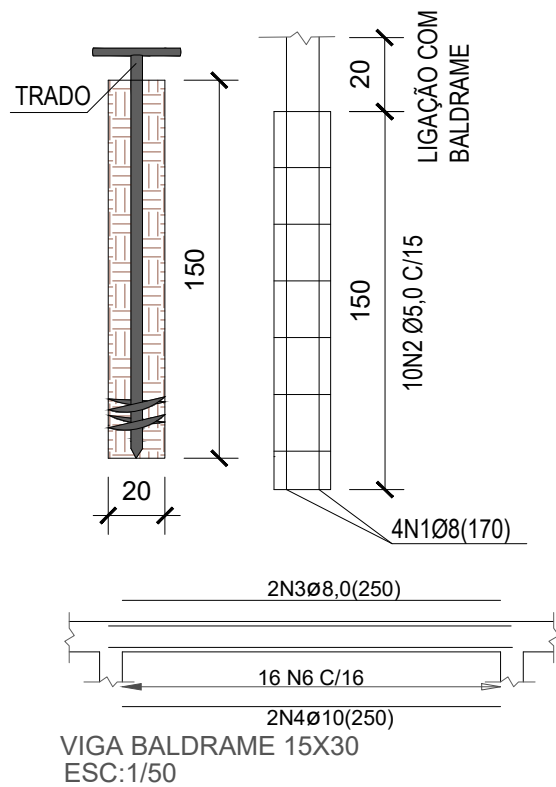
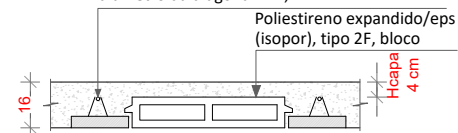
LEGENDA

- BLOCO 14x39
- BLOCO 14x19 (MEIO BLOCO)
- BLOCO 14x34
- COMPENSADOR 14x4
- COMPENSADOR 14x9
- FORA DA PAREDE NA VISTA
- GRAUTE

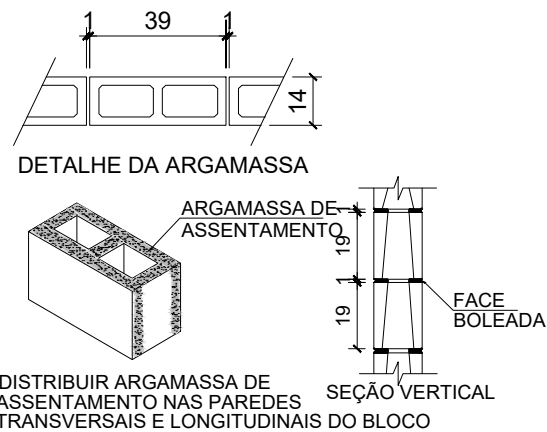


DETALHE GENÉRICO DAS LAJES TRELIÇADAS

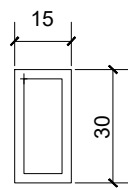
Treliza nervurada, altura = 120,0 mm, diâmetro dos banzos inferiores e superior = 6,0 mm, diâmetro da diagonal = 4,2 mm



VIGA BALDRAME 15X30
ESC:1/50



DISTRIBUIR ARGAMASSA DE ASSENTAMENTO NAS PAREDES TRANSVERSAIS E LONGITUDINAIS DO BLOCO



N6Ø5,0 c/16 C=85



PREFEITURA MUNICIPAL DE BIGUAÇU
SECRETARIA MUNICIPAL DE PLANEJAMENTO E GESTÃO

REFERÊNCIA:

PROJETO ESTRUTURAL LIXEIRA

PROPRIETÁRIO:

PREFEITURA MUNICIPAL DE BIGUAÇU

PROJETO:

PLANTA DE MODULAÇÃO

DETALHES

RESPONSÁVEIS TÉCNICOS:

FLÁVIO BOTKE E SILVA
Eng. Civil - CREA/SC 090922-3

RUA:

RUA JOÃO M ROSA

FOLHA:

1/1

DESENHO:

CAUBI PADILHA

DATA:

ABRIL/2023

ESCALA:

INDICADA