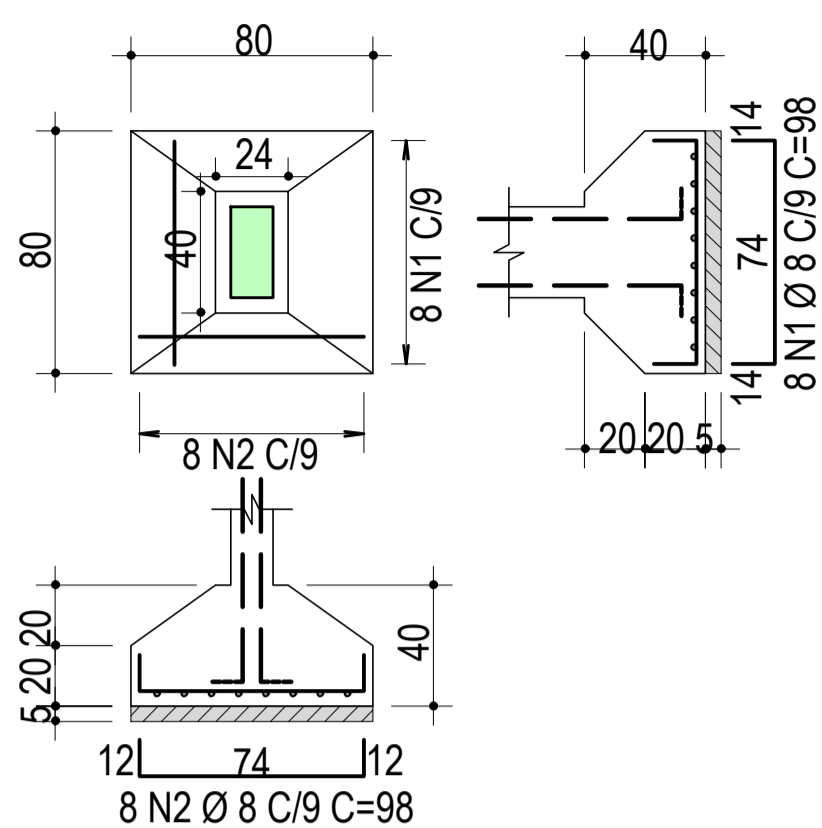
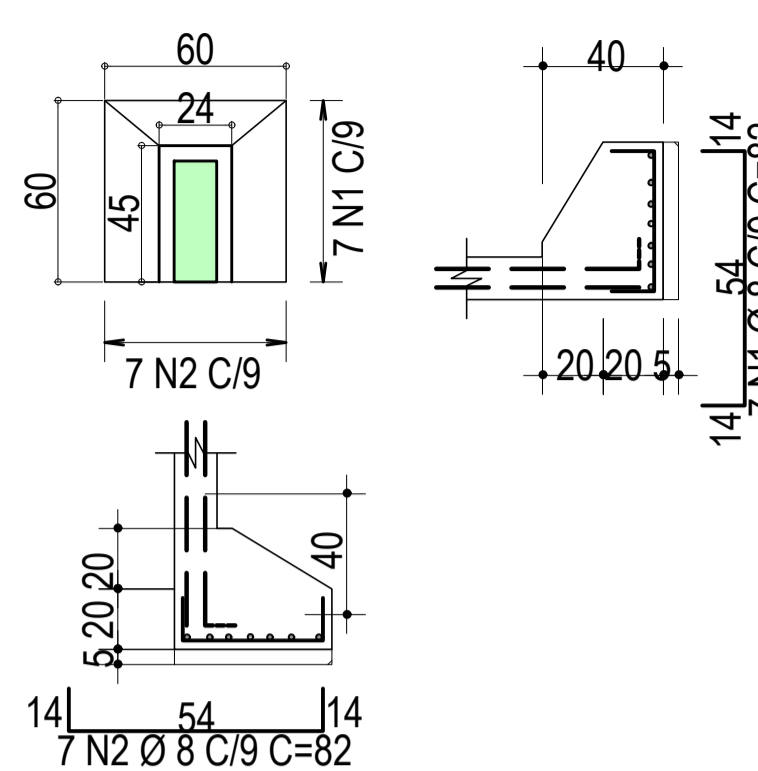


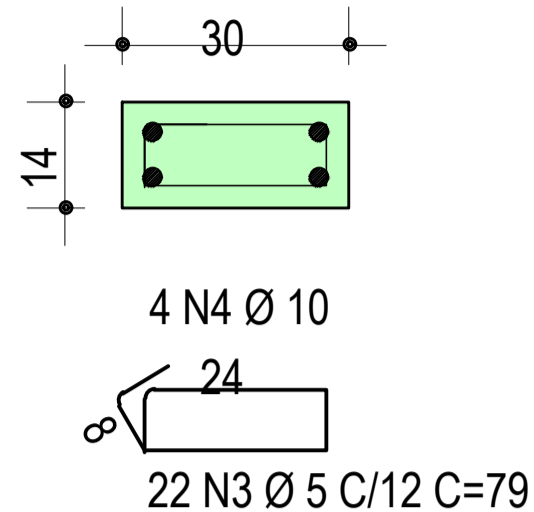
S1=S2=S3
(ESCALA 1:25)



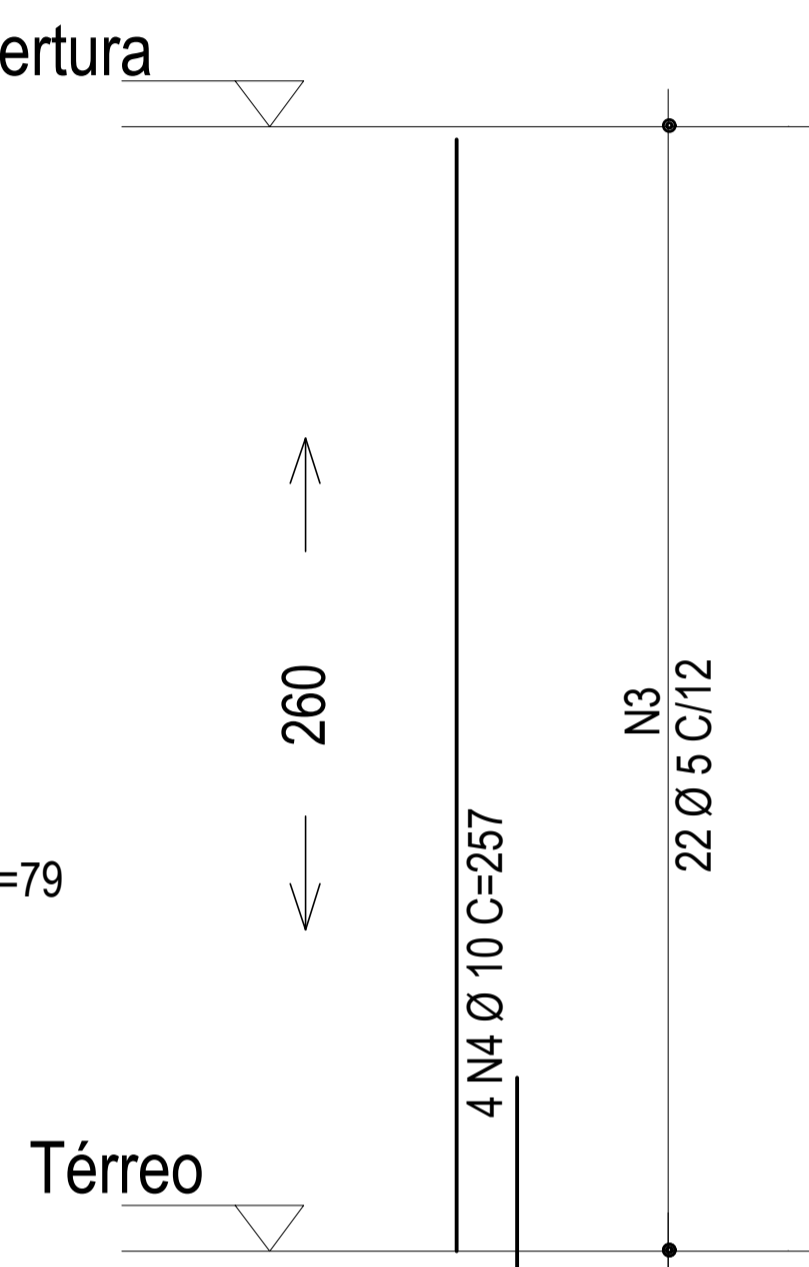
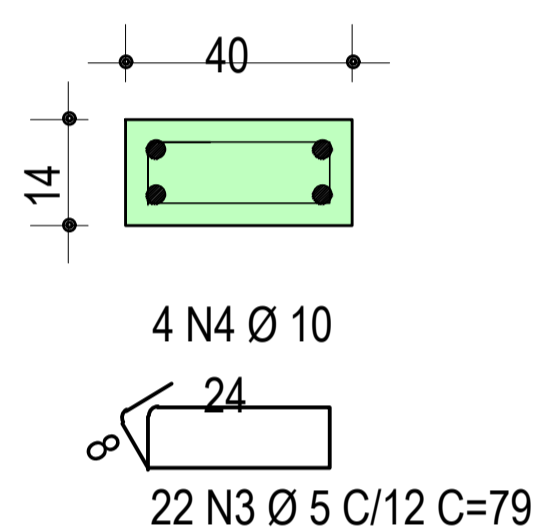
S4=S5
(ESCALA 1:25)



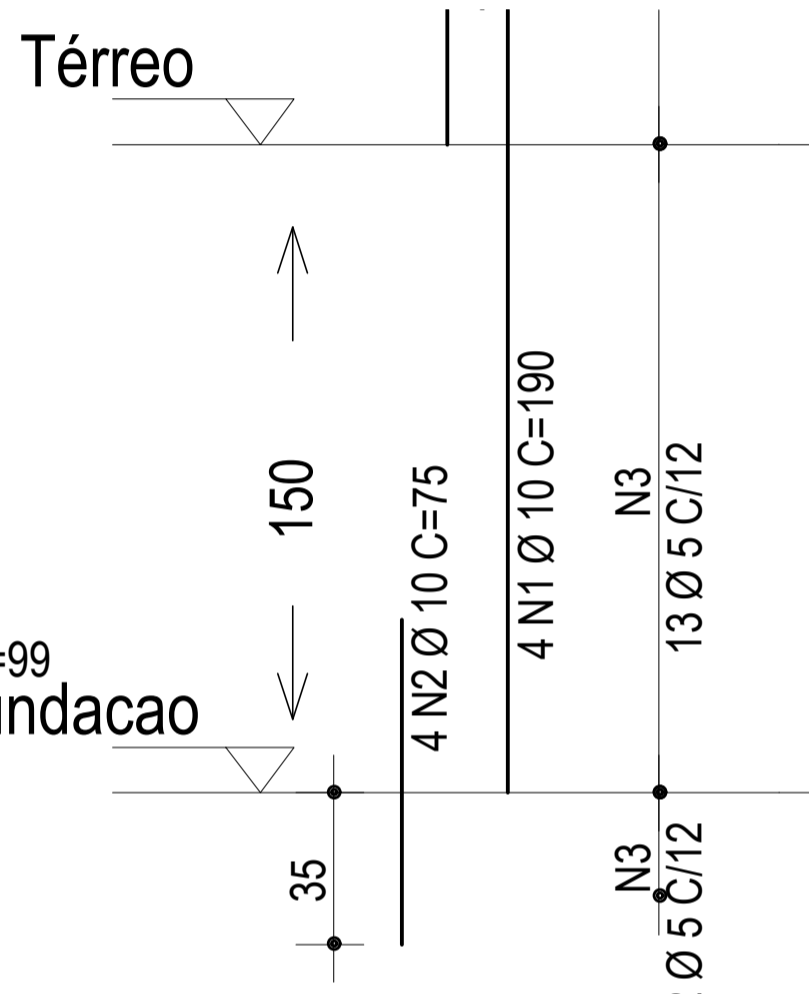
P1=P2=P3



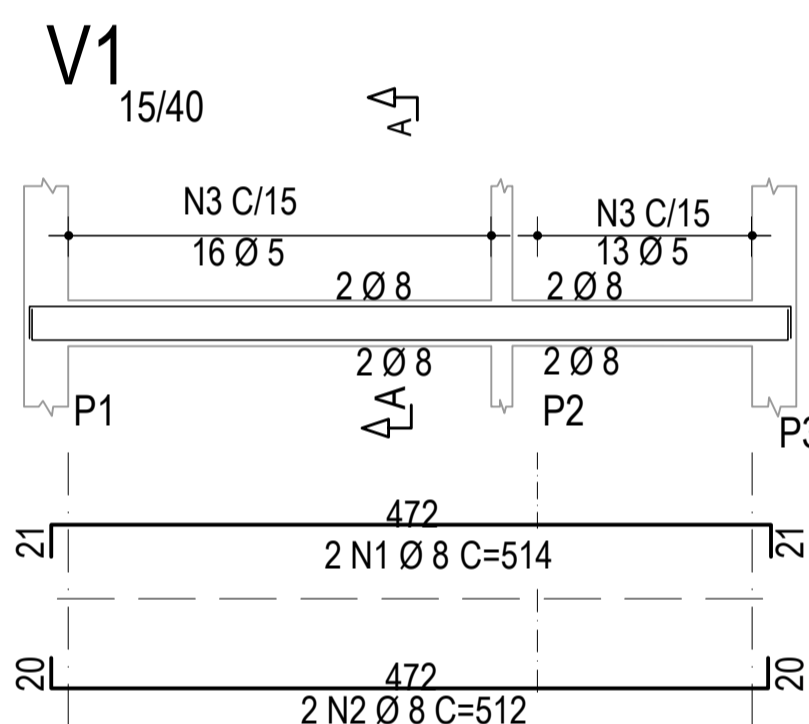
P4=P5 Cobertura



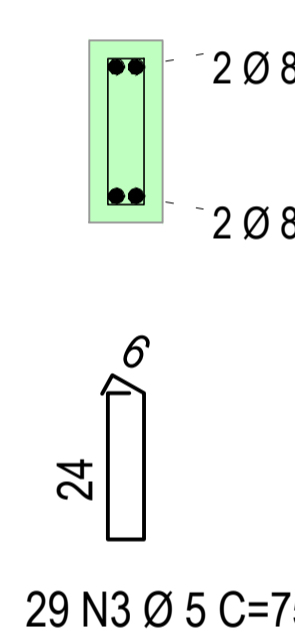
Térreo



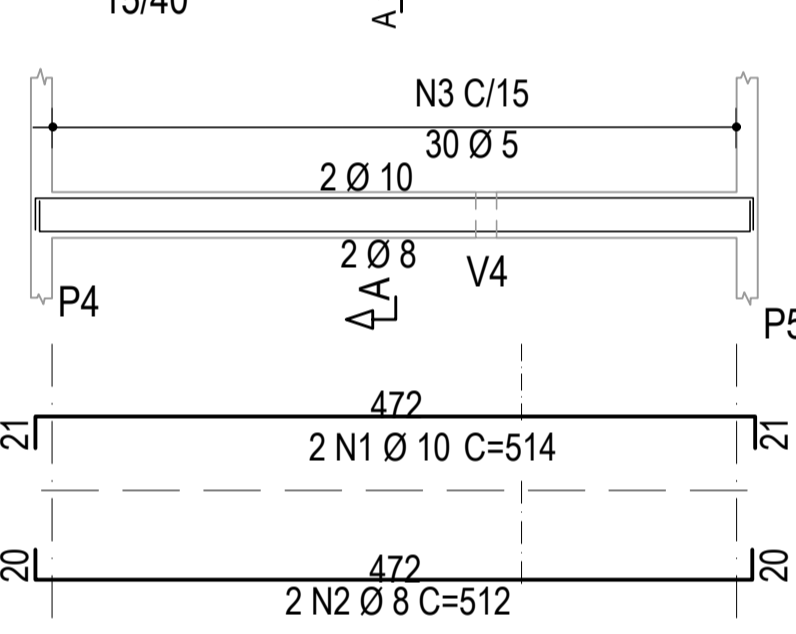
VIGA TÉRREO



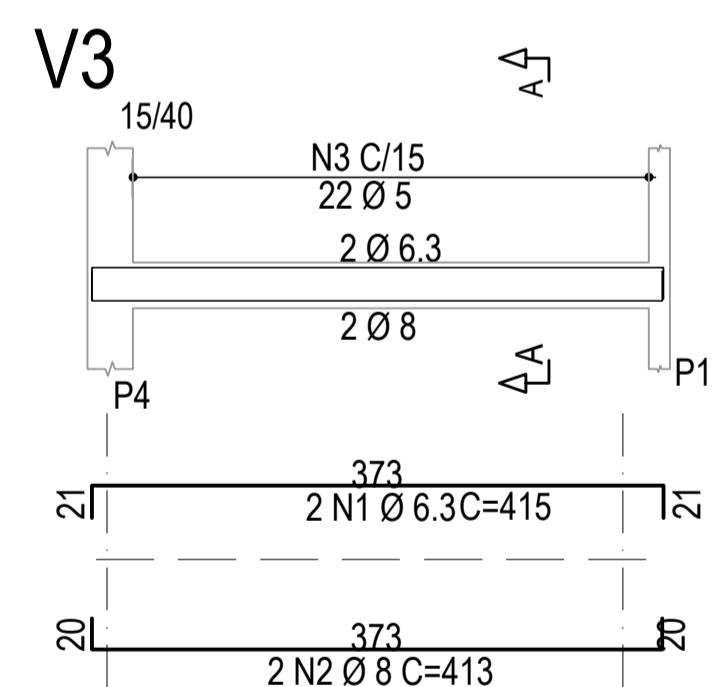
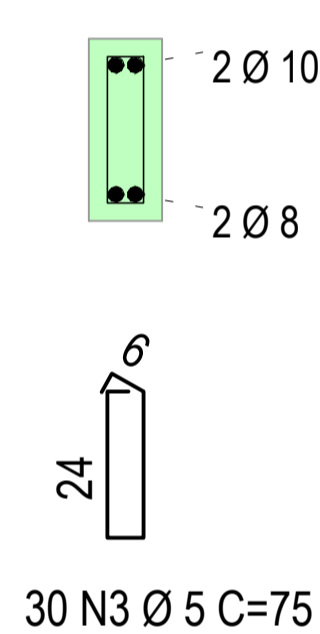
Corte A



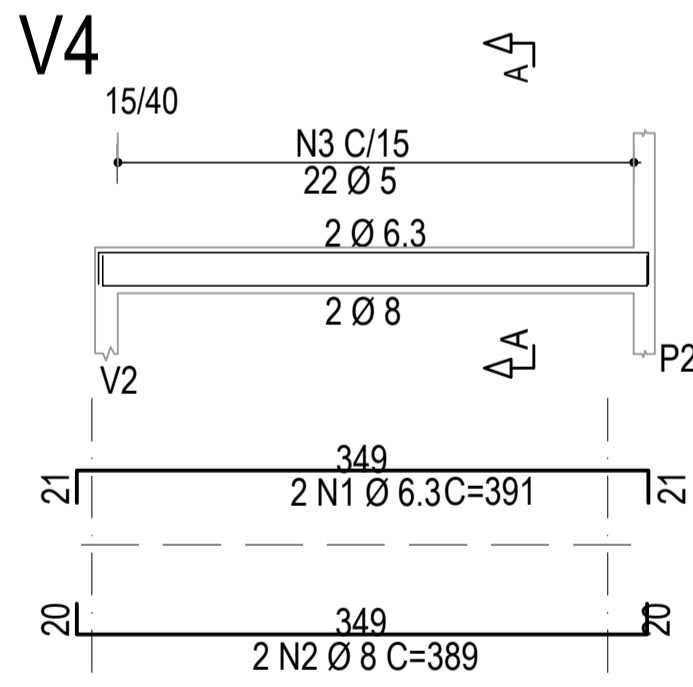
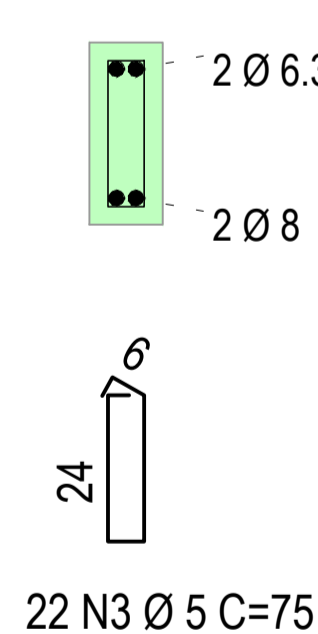
V2



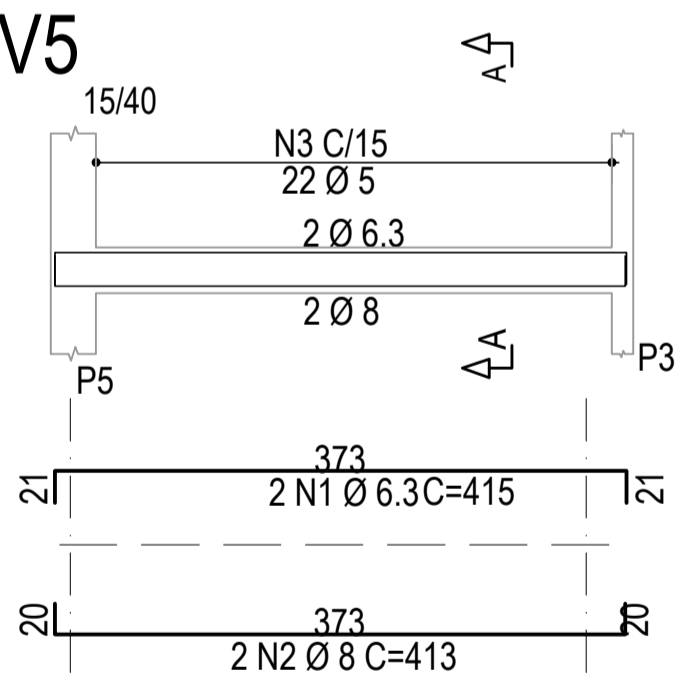
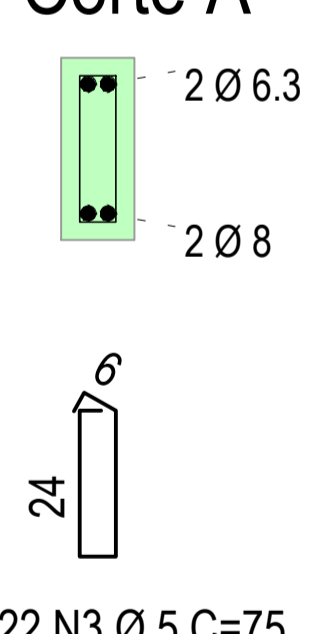
Corte A



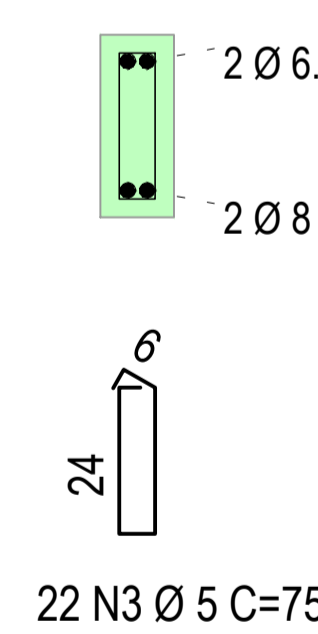
Corte A



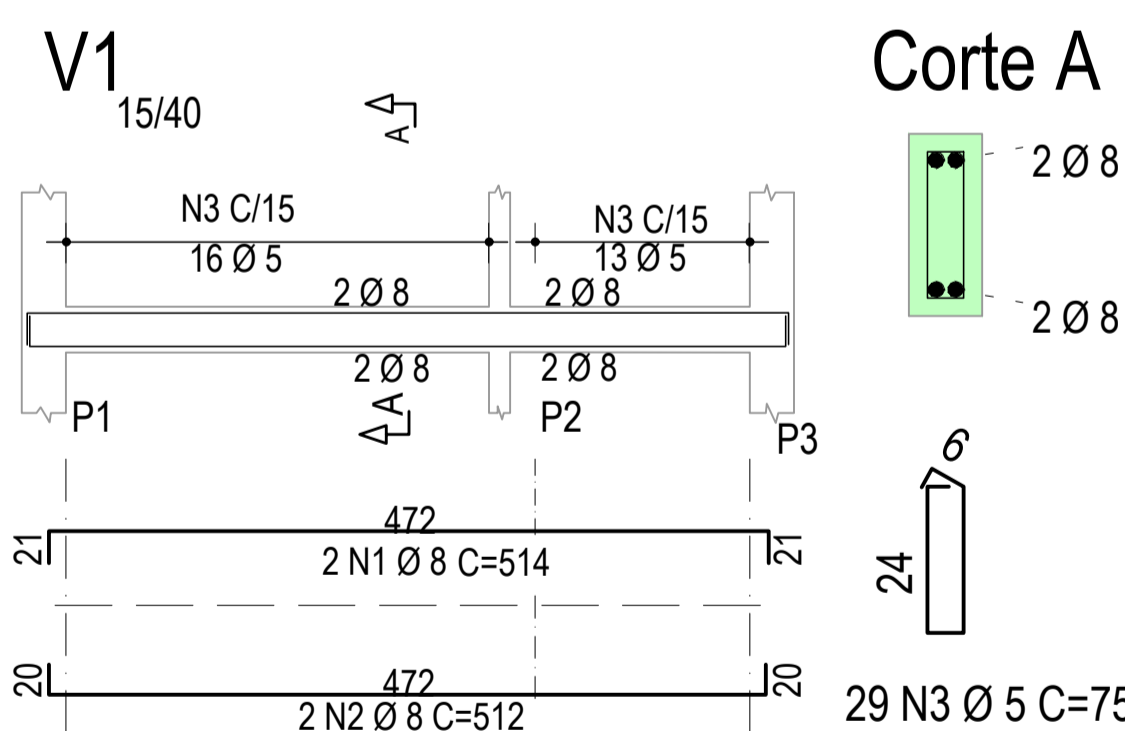
Corte A



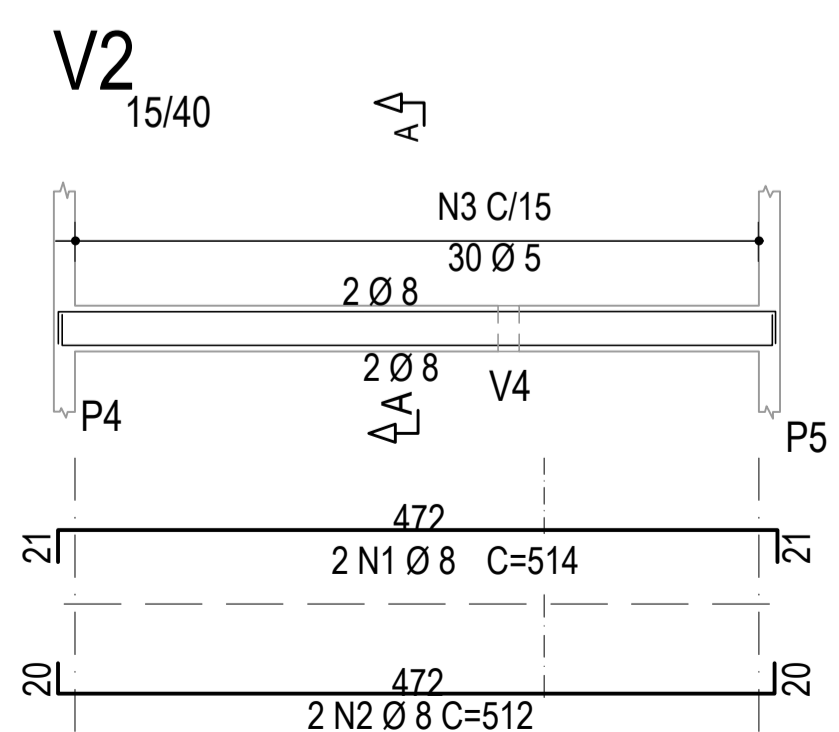
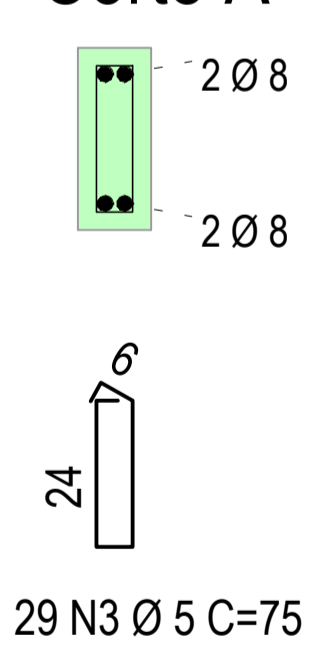
Corte A



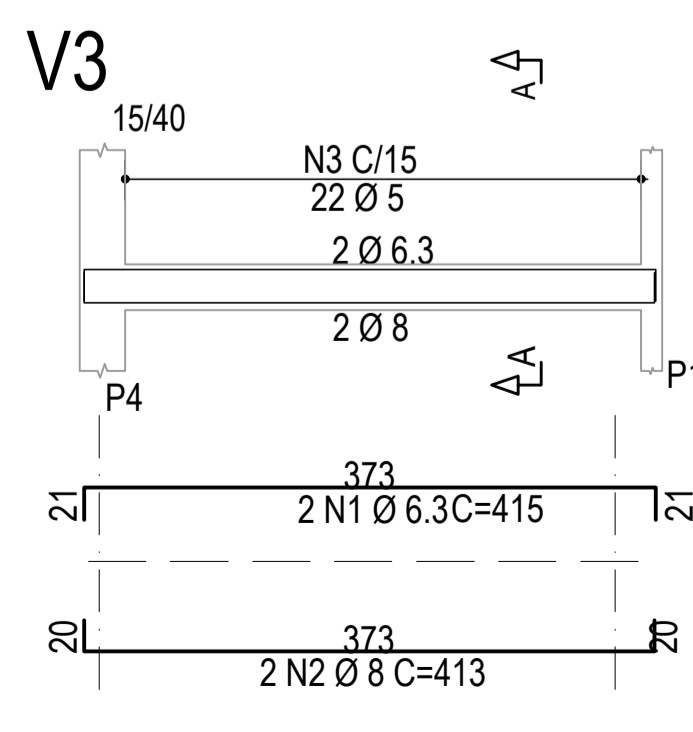
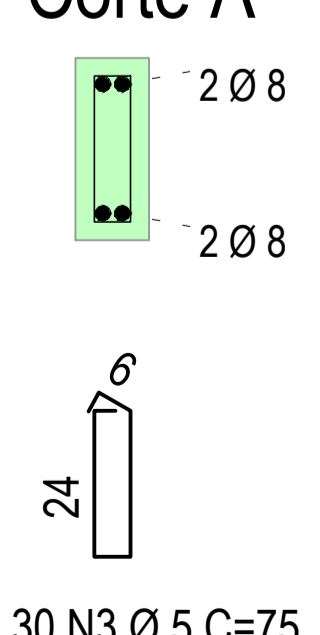
VIGA COBERTURA



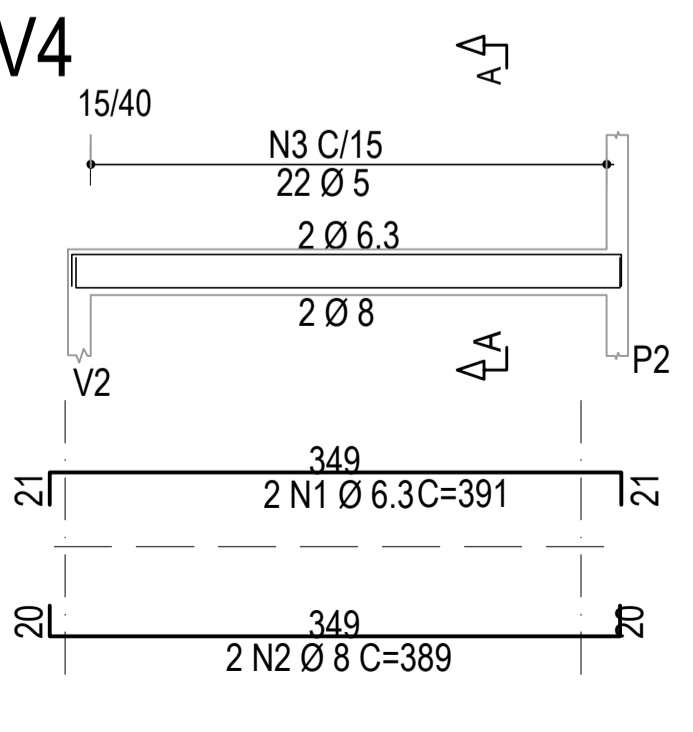
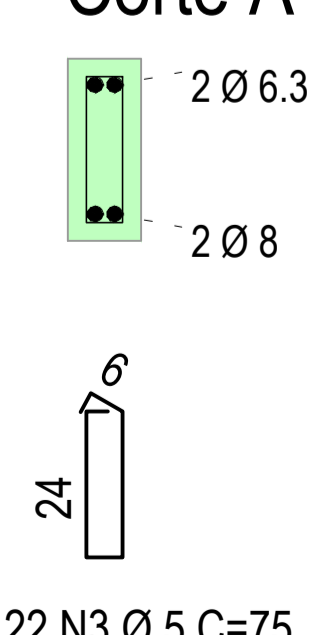
Corte A



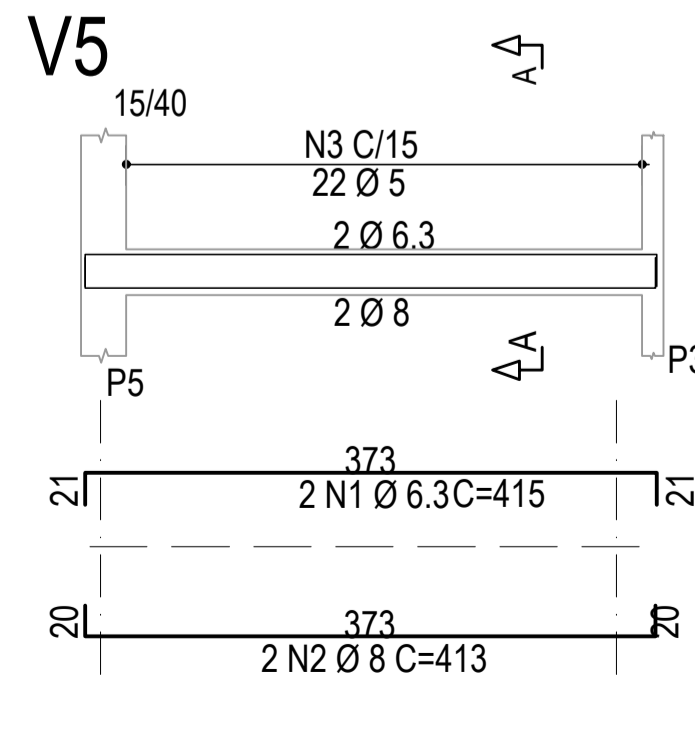
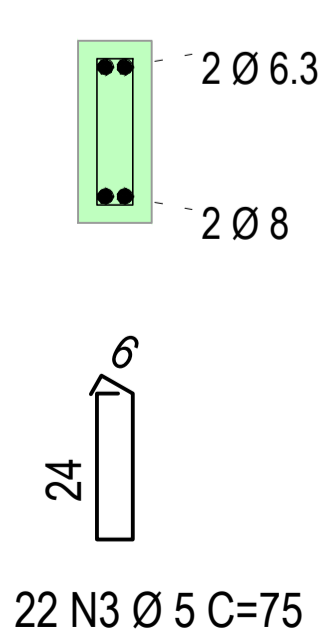
Corte A



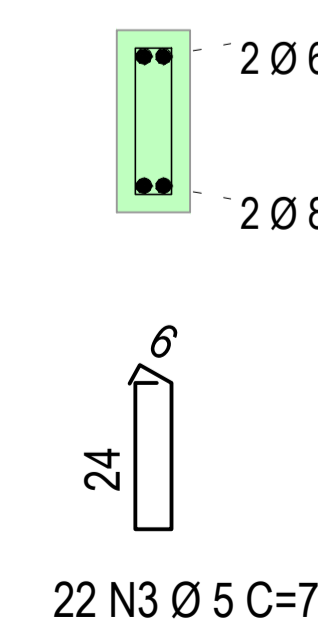
Corte A



Corte A



Corte A



AÇO	POS	BIT mm	QTD	COMP		
				UN cm	TOT cm	
S1=S2=S3	50A	1	8	24	98	2352
	50A	2	8	24	98	2352
S4=S5	50A	1	8	14	82	1148
	50A	2	8	14	82	1148
P1 Lances 1-2	50A	1	10	4	190	760
	50A	2	10	4	190	760
	50A	3	10	4	190	760
	50A	4	10	4	190	760
P2 Lances 1-2	50A	1	10	4	190	760
	50A	2	10	4	190	760
	50A	3	10	4	190	760
	50A	4	10	4	190	760
P3 Lances 1-2	50A	1	10	4	190	760
	50A	2	10	4	190	760
	50A	3	10	4	190	760
	50A	4	10	4	190	760
P4 Lances 1-2	50A	1	10	4	190	760
	50A	2	10	4	190	760
	50A	3	10	4	190	760
	50A	4	10	4	190	760
P5 Lances 1-2	50A	1	10	4	190	760
	50A	2	10	4	190	760
	50A	3	10	4	190	760
	50A	4	10	4	190	760

RESUMO DE AÇO

AÇO	BIT mm	COMPR m	PESO kgf
60A	5	146	25
50A	8	704	83
50A	10	104	25
Peso Total 60A =			25 kgf
Peso Total 50A =			114 kgf

AÇO	POS	BIT mm	QTD	COMP		
				UN cm	TOT cm	
V1	50A	1	8	2	514	1028
	50A	2	8	2	512	1024
	60A	3	5	29	75	2175
V1	50A	1	8	2	514	1028
	50A	2	8	2	512	1024
	60A	3	5	29	75	2175
V2	50A	1	10	2	514	1028
	50A	2	10	2	512	1024
	60A	3	5	30	75	2250
V2	50A	1	8	2	514	1028
	50A	2	8	2	512	1024
	60A	3	5	30	75	2250
V3	50A	1	6.3	2	415	830
	50A	2	6.3	2	413	826
	60A	3	5	22	75	1650
V3	50A	1	6.3	2	415	830
	50A	2	6.3	2	413	826
	60A	3	5	22	75	1650
V4	50A	1	6.3	2	391	782
	50A	2	6.3	2	389	778
	60A	3	5	22	75	1650
V4	50A	1	6.3	2	391	782
	50A	2	6.3	2	389	778
	60A	3	5	22	75	1650
V5	50A	1	6.3	2	413	826
	50A	2	6.3	2	413	826
	60A	3	5	22	75	1650
V5	50A	1	6.3	2	413	826
	50A	2	6.3	2	413	826
	60A	3	5	22	75	1650

RESUMO DE AÇO

AÇO	BIT mm	COMPR m	PESO kgf
60A	5	188	31
50A	6.3	49	11
50A	8	131	65
50A	10	11	7
Peso Total 60A =			31 kgf
Peso Total 50A =			83 kgf



PREFEITURA MUNICIPAL DE BIGUAÇU
SECRETARIA MUNICIPAL DE PLANEJAMENTO

REFERÊNCIA:

PROJETO ESTRUTURAL DA AMPLIAÇÃO DA LAVANDERIA E DEPOSITO DO CEIM LINDOIA

PROPRIETÁRIO:
PREFEITURA MUNICIPAL DE BIGUAÇU

PROJETO:
DETALHE DA SAPATA, PILAR E VIGA

RESPONSÁVEL TÉCNICO
EDUARDO JOSÉ MENDES
Eng. Civil - CREA/SC 149769-6

RUA:
RUA JOÃO M ROSA

DESENHO:
CAUBI PADILHA

DATA:
MARÇO/2023

ESCALA:
INDICADA