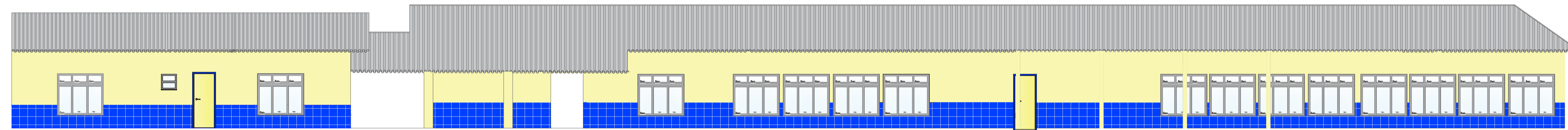
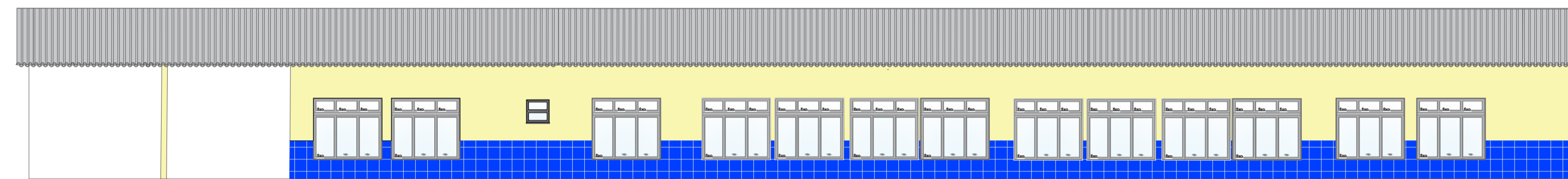


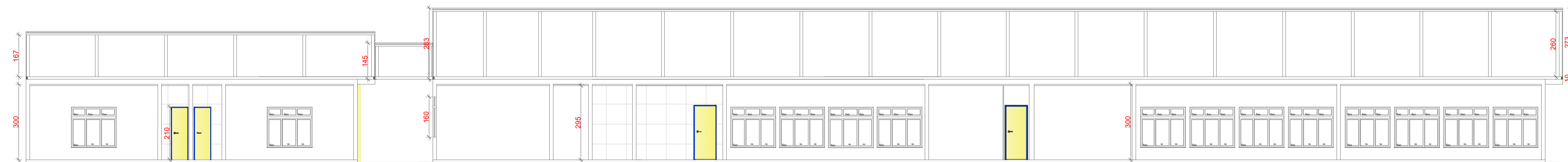
VISTA A



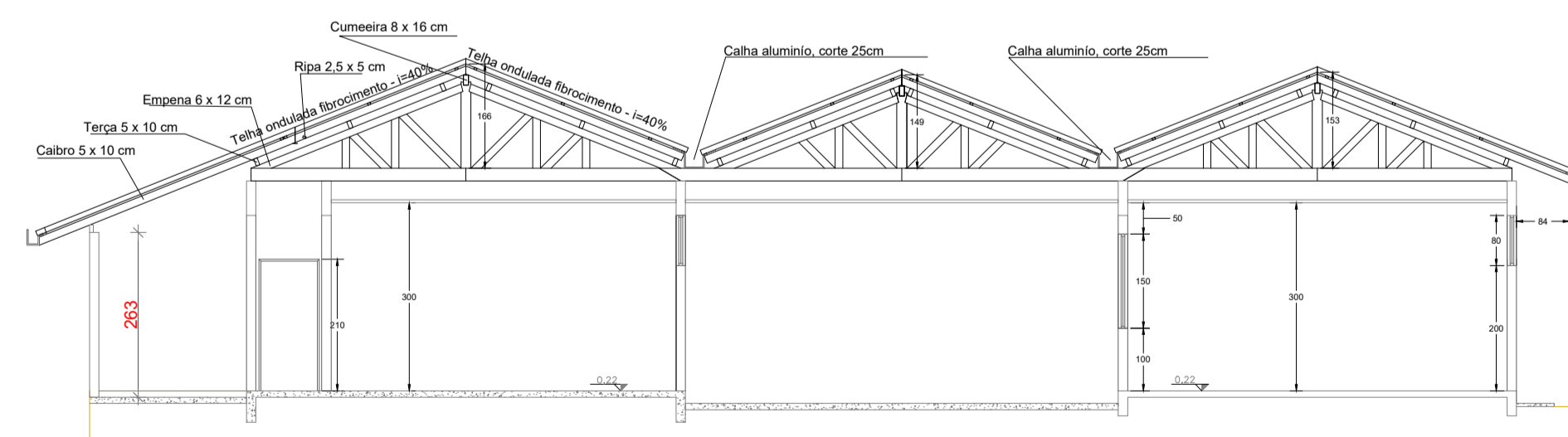
VISTA B



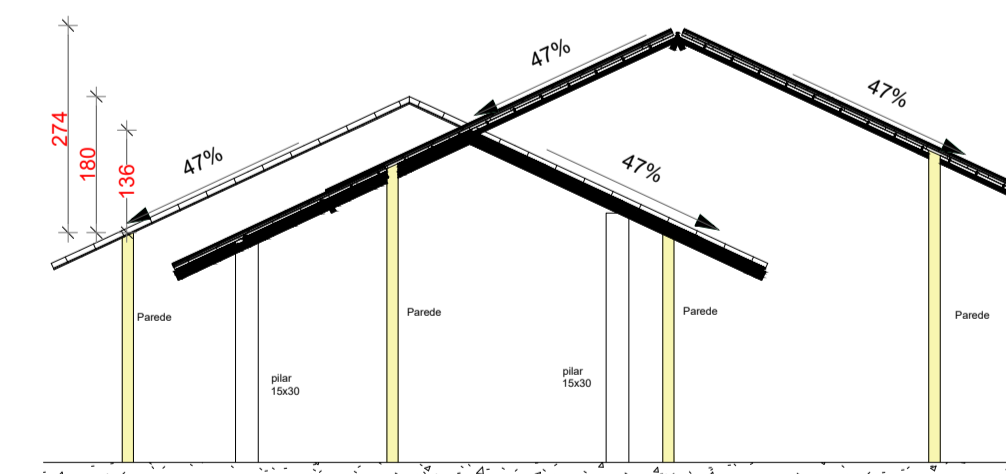
CORTE A



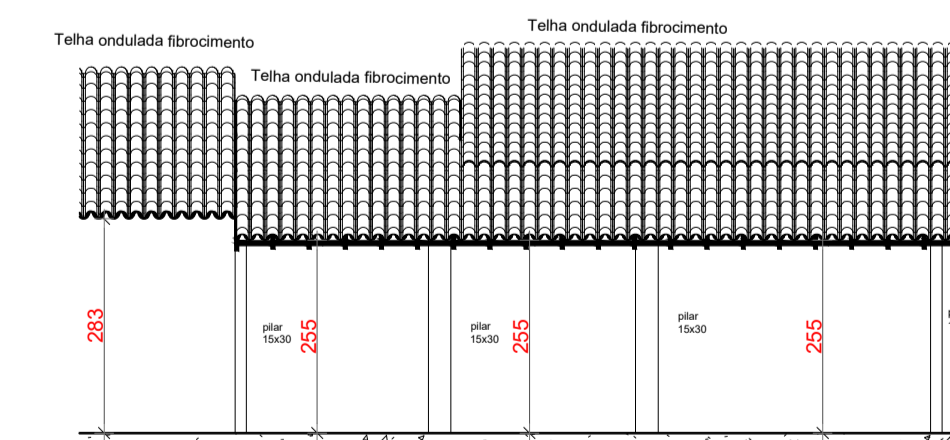
CORTE B



CORTE C



CORTE D



 <b>PREFEITURA MUNICIPAL DE BIGUAÇU</b>	<b>PREFEITURA MUNICIPAL DE BIGUAÇU</b> SECRETARIA MUNICIPAL DE PLANEJAMENTO E GESTÃO		
	REFERÊNCIA: <b>C.E.I.M. PROFª LINDÓIA MARIA SOUZA DE FARIA</b> Rua José Francisco Sodré, s/n - Praia João Rosa		
PROPRIETÁRIO: PREFEITURA MUNICIPAL DE BIGUAÇU	PROJETO: PROJETO ARQUITETÔNICO FACHADAS E CORTES		FOLHA: <b>4/7</b>
RESPONSÁVEL TÉCNICO: FLÁVIO BOTRE E SILVA Eng. Civil - CREA/RJ 09602-3	ÁREA: 2671 m²	ESCALA: 1/100	
DESENHO: CAUBI PADILHA	DATA: ABRIL/2023	ESCALA: 1/100	